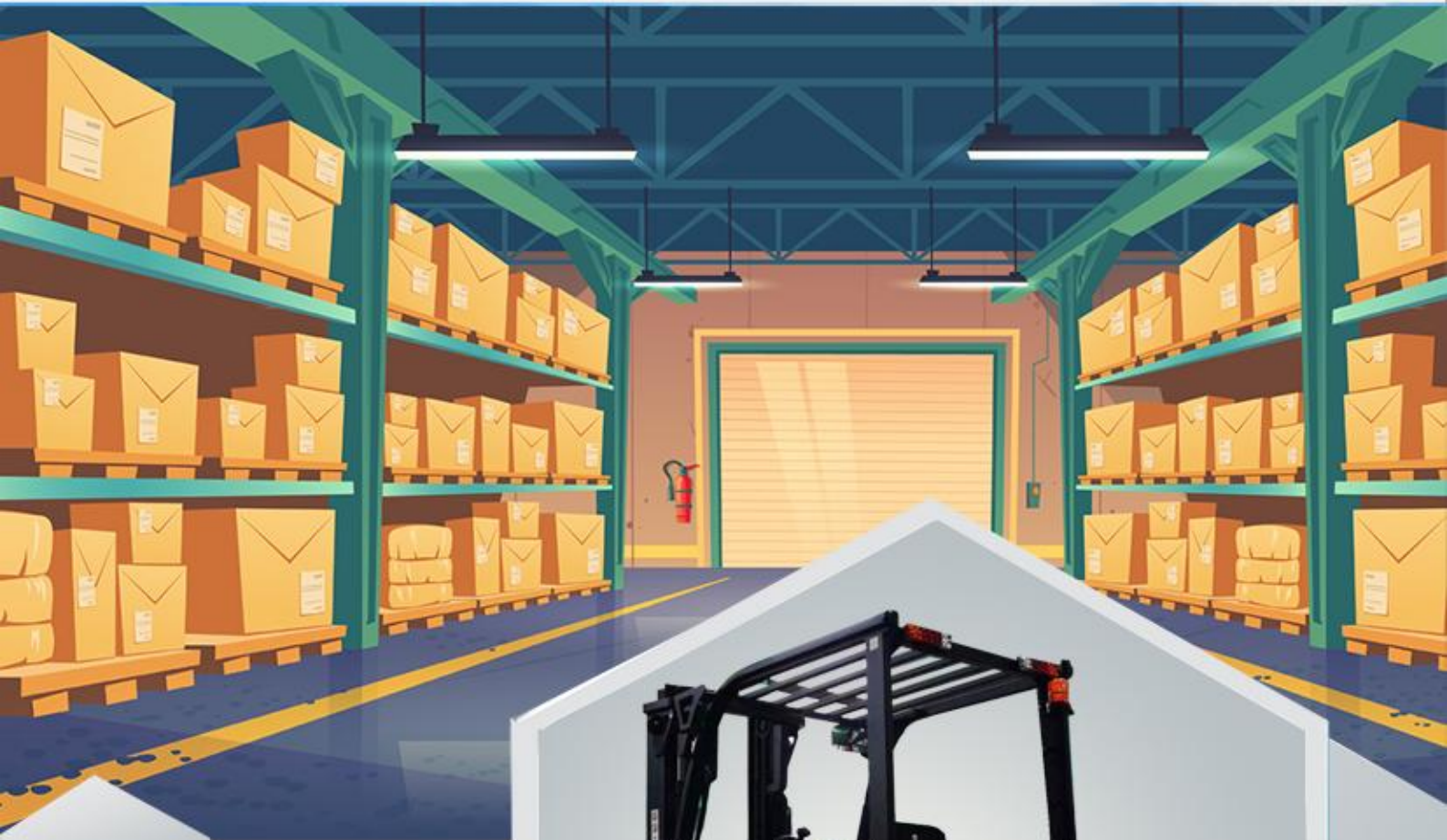




KAMUJA

ELECTRICAL FORKLIFT FE4P35Q



Hunan Kamuja Machinery & Equipment Co.,Ltd



A Certificated Company of GB/T 19001-2016
ISO 9001:2015

INTRODUCTION

Q Series electric balance fork is combined others existing series respective advantages to meet the purpose of medium and light weight working conditions, while bringing comfortable and efficient driving experience. Batteries are available in two options, lead-acid batteries and smart lithium batteries. The same body can be freely chosen.

The whole center of gravity is lowered, and the height of the top guard is lowered, which facilitates the operation of the vehicle in the environment of limited height.

FEATURES



① DRIVE AC MAINTENANCE-FREE

Drive motor adopts AC motor, maintenance-free, strong power; Conventional DC motors require frequent carbon brush replacement, while KAMUJA all-AC motors do not require carbon brush replacement; With speed sensing and temperature sensing, the protection function is complete, and the reliability and life are greatly improved.

② SIDE EXIT BATTERY DESIGN

The battery can be replaced with another forklift, allowing for easy 24 hour continuous operation.

③ LOW CENTER OF GRAVITY DESIGN

The traditional system uses a transverse fan-shaped drive axle, parallel arrangement and large transmission ratio. The battery is sunk at the bottom of the frame, the vehicle height is 2080mm, and the stability is good.

④ LOW NOISE, GROUND VIBRATION DESIGN

The hydraulic system adopts low noise gear pump and full hydraulic power steering. Low noise and comfortable operation.

Steering bridge shock absorption design: flexible connection is adopted to effectively protect the vehicle system and extend the service life of the vehicle.

⑤ ELECTROMAGNETIC BRAKING MAKES DRIVING AND PARKING SAFER AND EASIER

The vehicle adopts the car control mode, electromagnetic braking, so that the driver's operation is more comfortable.

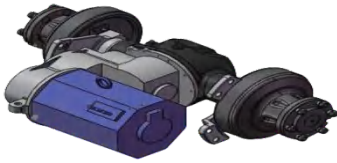
HUNAN KAMUJA MACHINERY & EQUIPMENT CO.,LTD.

Room 818, 4th Floor, Chang Tong Logistic Center, No.18 Qingzhuhu Road, Changsha, Hunan, China

Tel: +86 0731 88677248 alvaro.jin@kamuja.cn www.kamuja.cn



Certificated Company of GB/T 19001-2016/ ISO 9001:2015


DETAILS


The transmission system adopts a transverse fan-shaped drive axle, the parallel arrangement and large transmission ratio. The battery is sunk at the bottom of the frame, and the vehicle stability is good. The travelling motor adopts AC maintenance-free motor.



Multi-way valve control front, make the operation more convenient.



Damping design of steering bridge, allows flexible connection is adopted to effectively protect the vehicle system and extend the whole system which extend the service life of the vehicle.



Car control mode: suspension service brake, step-less transmission makes much fun of driving during the work.



The whole vehicle hood are formed by One Piece steel plate, which is simple and easy to operate.

The forklift has a wide field of view frame, the intelligent buffer makes a smooth downing to the ground and it's easy to operate.

Compared with others designs, it's more compact and is more suitable for small job sites.



Parking brake adopts one-click, making parking safer and easier.



Multi-function display, fault alarm, low battery reminder, high/medium/low speed switching protection.



The whole car is equipped with standard LED four-fulcrum lamps: headlights, front turn signals, rear combination lights, warning lights. Low power consumption, makes work at night without problem.

HUNAN KAMUJA MACHINERY & EQUIPMENT CO.,LTD.

Room 818, 4th Floor, Chang Tong Logistic Center, No.18 Qingzhuhu Road, Changsha, Hunan, China

Tel: +86 0731 88677248 alvaro.jin@kamuja.cn www.kamuja.cn



Certificated Company of GB/T 19001-2016/ ISO 9001:2015

OPTIONAL ATTACHMENTS



Multi-functional soft bag clip



Brick clamp



Roll clip



String rod



Trash clip



Push-puller



Side shifter



Carton holder

Optional Devices & Accessories

Tilt cylinder jacket

Dual drive wheel

Cab

Overhead exhaust device

User specified color

Cab heater

Rear working light

Alarm lamp

Solid tyre

Middle exhaust device

Exhaust fire protection

Suspension seat

Weighing system

Auxiliary hydraulic valve assembly

Extinguisher

Copper water tank

LED rear light

Double air filter

Optional Fittings

Roll clip

Rotate the flat clamp

Load stabilizer

Multi-purpose bucket clamp

Soft clip

Can clip

Miter clamp

Boom

String rod

Side yoke

Swivel fork

Fork extension cover

Load ejector

Carton clip

Position ejector

Bucket

Lifting hook

Extended fork

HUNAN KAMUJA MACHINERY & EQUIPMENT CO.,LTD.

Room 818, 4th Floor, Chang Tong Logistic Center, No.18 Qingzhuhu Road, Changsha, Hunan, China

Tel: +86 0731 88677248 alvaro.jin@kamuja.cn www.kamuja.cn

Certificated Company of GB/T 19001-2016/ISO 9001:2015

Optional Mast

Description	Lift Height h3 mm	Free Lift Height h2 mm	Mast Stowed Height h1 mm	Mast Extended Height h4 mm	Tilt Angle Lean Forward/Back ward $\alpha/\beta(^{\circ})$	Load Capacity (kg)C=500mm
						No Side-shift, Inflatable Single Wheel
						FE4P35Q
ZT Standard Stage II Mast	2000	140	1680	3079	6/10	3500
	2500	140	1930	3579	6/10	3500
	3000	140	2180	4079	6/10	3500
	3300	140	2330	4379	6/10	3500
	3500	140	2430	4579	6/10	3500
	3600	140	2480	4679	6/10	3500
	3700	140	2530	4779	6/10	3250
	4000	140	2730	5079	6/6	3000
	4300	140	2880	5379	6/6	2800
	4500	140	2980	5579	6/6	2600
ZZ Wide View Full Free Stage II Mast	2000	491	1570	3079	6/10	3500
	2500	741	1820	3579	6/10	3500
	3000	991	2070	4079	6/10	3500
	3300	1141	2220	4379	6/10	3500
	3500	1241	2320	4579	6/10	3500
	3600	1291	2370	4679	6/10	3500
	3700	1341	2420	4779	6/6	3500
	4000	1541	2620	5079	6/6	3200
DZ Wide View Full Free Stage III Mast	4000	916	1970	5079	6/6	3200
	4300	1041	2095	5379	6/6	3000
	4500	1091	2145	5579	6/6	3000
	4800	1191	2245	5879	6/6	2500
	5000	1334	2388	6079	6/6	2400
	5500	1568	2622	6579	3/6	1750
	6000	1801	2855	7079	3/6	1250
	6500	2034	3088	7579	3/3	900

HUNAN KAMUJA MACHINERY & EQUIPMENT CO.,LTD.

Room 818, 4th Floor, Chang Tong Logistic Center, No.18 Qingzhuhu Road, Changsha, Hunan, China

Tel: +86 0731 88677248 alvaro.jin@kamuja.cn www.kamuja.cn



Certificated Company of GB/T 19001-2016/ ISO 9001:2015



SPECIFICATIONS

Characteristic	1.1	Brand		KAMUJA
	1.2	Model		FE4P35Q
	1.3	Drive mode: electric (battery or power supply), diesel, gasoline, gas, manual		Motor
	1.4	Operation mode: manual, walking, standing, riding, picking		Mount type
	1.5	Rated load capacity	Q(kg)	3500
	1.6	Load center distance	C(mm)	500
	1.7	Front overhang	X(mm)	483
	1.8	Wheel base	Y(mm)	1800
Weight	2.1	Implicit battery (see 6.5) when self-weight	kg	4480
	2.2	Bridge load at full load, front/rear	kg	7140/840
	2.3	Bridge load when unloaded, front/back	kg	1960/2520
Chassis	3.1	Tires: Solid rubber, super-elastomer, air tire, polyurethane tire		Solid/pneumatic tire
	3.2	Front wheel specification		28×9-15-14PR
	3.3	Rear wheel specification		6.50-10-10PR
	3.4	Number of wheels, front/rear wheels (x= drive wheels)		2×/2
	3.5	Front wheel tread	b10(mm)	1004
	3.6	The rear wheel base	b11(mm)	982
Basic size	4.1	Gantry/fork tilt Angle, forward/back tilt	$\alpha/\beta(^{\circ})$	6/10
	4.2	Gantry retracting height	h1(mm)	2185
	4.3	Free lifting height	h2(mm)	145
	4.4	Lifting height	h3(mm)	3000
	4.5	Gantry development height	h4(mm)	4079
	4.6	Top guard height	h6(mm)	2150
	4.7	Seat height	h7(mm)	1130
	4.8	Traction pin height	h10(mm)	580
	4.9	Overall length	l1(mm)	3818
	4.10	Body length (without fork)	l2(mm)	2748
	4.11	Total width	b1(mm)	1226
	4.12	Fork size	s/e/l(mm)	50/125/1070
	4.13	Width of fork rack	b3(mm)	1100
	4.14	Ground clearance under the gantry	m1(mm)	135
	4.15	Ground clearance under the gantry	m2(mm)	150

HUNAN KAMUJA MACHINERY & EQUIPMENT CO.,LTD.

Room 818, 4th Floor, Chang Tong Logistic Center, No.18 Qingzhuhu Road, Changsha, Hunan, China

Tel: +86 0731 88677248 alvaro.jin@kamuja.cn www.kamuja.cn



Certificated Company of GB/T 19001-2016/ ISO 9001:2015



	4.16	Working channel width,1000X1200 pallets (1200 cross-fork placement)	Ast(mm)	4123
	4.17	Working channel width,800X1200 pallets (1200 placed along the fork)	Ast(mm)	4323
	4.18	Radius of turning circle	Wa(mm)	2440
Performance Parameter	5.1	Travel speed, full/empty	Km/h	11/12
	5.2	Increase speed, full/empty	m/s	0.25/0.33
	5.3	Descent speed, full/empty	m/s	<0.6
	5.4	Traction, full/empty S2 60 minutes		3800/2800
	5.5	Maximum climb, S2 5 minutes full/no load	%	13/15
	5.6	Service brake		electromagnetic brake
Electrical Parameter	6.1	Drive motor power S2 5 min	KW	11
	6.2	Increase motor power S3 by 15%	KW	12
	6.3	Battery standard		DIN
	6.4	Battery voltage/rated capacity K5	Volts/amps per hour	Lead acid :80/400
	6.5	Battery weight	kg	280
	6.6	Battery size, length/width/height	mm	770/650/680
Others	7.1	Drive control type		AC
	7.2	Work stress	Mpa	17.5
	7.3	The amount of oil	L/min	36
	7.4	Driver's ear noise level according to EN 12 053	Decibel	75

※ The technical information may vary by the update policy, the changes will be without prior notice.

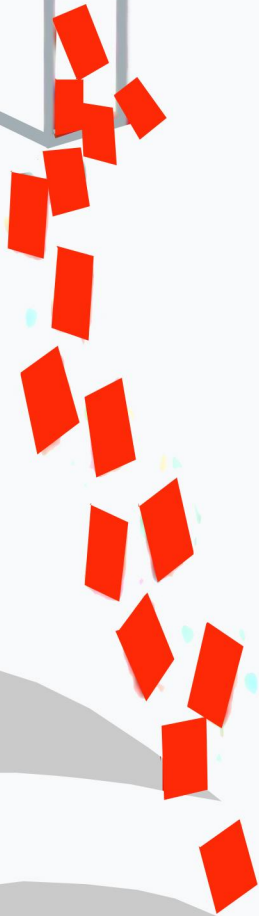
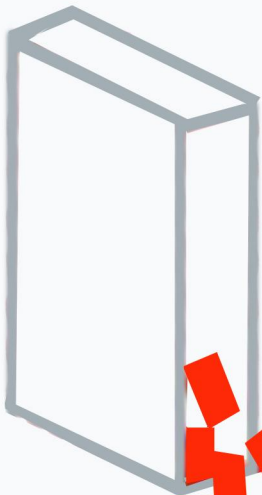
HUNAN KAMUJA MACHINERY & EQUIPMENT CO.,LTD.

Room 818, 4th Floor, Chang Tong Logistic Center, No.18 Qingzhuhu Road, Changsha, Hunan, China

Tel: +86 0731 88677248 alvaro.jin@kamuja.cn www.kamuja.cn



Certificated Company of GB/T 19001-2016/ ISO 9001:2015



Hunan Kamuja Machinery & Equipment Co.,Ltd

Address: Qingzhu Hu Road N.18, Chang Tong Logistic Center Floor 4 Room 818,
Jinxia Economic Development Zone, Changsha City, Hunan Province, P.R of China.

333 SE 2nd Avenue Suit 2000 Miami FL 33131. USA

Tel: +86 731 8867 7248 e-mail: info@kamuja.cn

Web site: www.kamuja.cn



A Certificated Company of GB/T 19001-2016/
ISO 9001:2015